

PPD Green Group


13th February 2026


Welcome


- Motivations
 - PPD Sustainability Strategy Group – summer 2025
 - STFC Green Group Network (more later)
- More than just information flow and opinions
 - Specific actions -> bringing about change
- Meet (approx.) every 2 months
 - Interleaved between STFC Green Group Network meetings


PPD: Strategy Group Output


PPD Environmental Sustainability Strategy Overview

 **Align Science with STFC Environmental Strategy and UKRI Net-Zero Goal** - Embed sustainability into our core mission of advancing particle physics, ensuring fundamental research goes hand-in-hand with environmental responsibility. Join STFC Green Network.

 **Reduce PPD Carbon Footprint and Preserve Environment** – Optimise energy use in laboratories and for computing. Minimize resources waste (e.g., water). Adopt a circular approach to equipment lifecycle. Promote sustainable travel and sustainable procurement. Shift to plant-based low-impact catering.

 **Foster a Culture of Environmental Sustainability** – Foster awareness, training, and incentives for staff and students to integrate sustainable practices into daily research activities.

 **Measure & Report Progress** – Commit to clear ambitious targets, transparent reporting, and continual improvement in environmental performance.

 **Advocacy** – Influence strategies in host laboratories, including experiments planning and operations. Promote coordinated community efforts. Join STFC Green Network.

Aims

- Champion and [embed](#) Environmental Sustainability (ES) in PPD
- Encourage practical ES [actions](#) in PPD
- Encourage similar progress in partner labs (e.g. CERN, etc.) through [advocacy](#) and practical actions
- Seek [funding](#) from STFC / UKRI / elsewhere in support of ES initiatives
- [Align](#) with STFC ES Strategic Delivery Plan (and implicitly the **[Greening Government Commitments](#)** 2021-2025 (& sequel))
- [Link](#) with the **[STFC Green Group Network](#)**
 - share best practice
 - collaborate with other green groups
 - disseminate news to PPD and report PPD progress
- [Report](#) to PPD Management Board and/or PPD Director

Representation

- All in PPD are welcome to contribute,
 - but, need people with specific representation
- Areas:-
 - Detector R&D
 - Experiment operations and exploitation
 - Computing [Katy Ellis]
 - Boulby [Kevin Lester, Joel Manton]
 - PPD Labs [Kristian Harder]
 - Travel [Katy ? Robin ?]
 - Administration [Terry]
 - Early career [Jyoti]
 - Project Office [Lei Zhang]

Status: we're definitely not the first !!

- STFC Green Group Network – Feb'26



CLF Environmental Sustainability Working Group



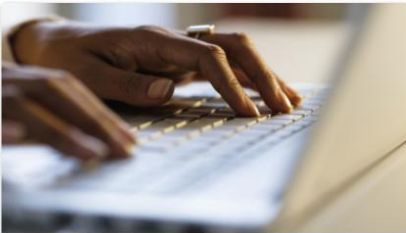
Daresbury Green Group



Hartree Environmental Sustainability Working Group



ISIS Sustainability Network



ISIS Sustainability Network - Computing



RAL Space Sustainability Working Group



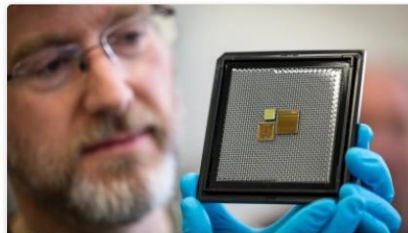
Royal Observatory Edinburgh Environmental Working Group



Scientific Computing Energy Efficiency Team



SPC Green Group



Technology Department Sustainability Group



SPADE



WEST

Bookmarks

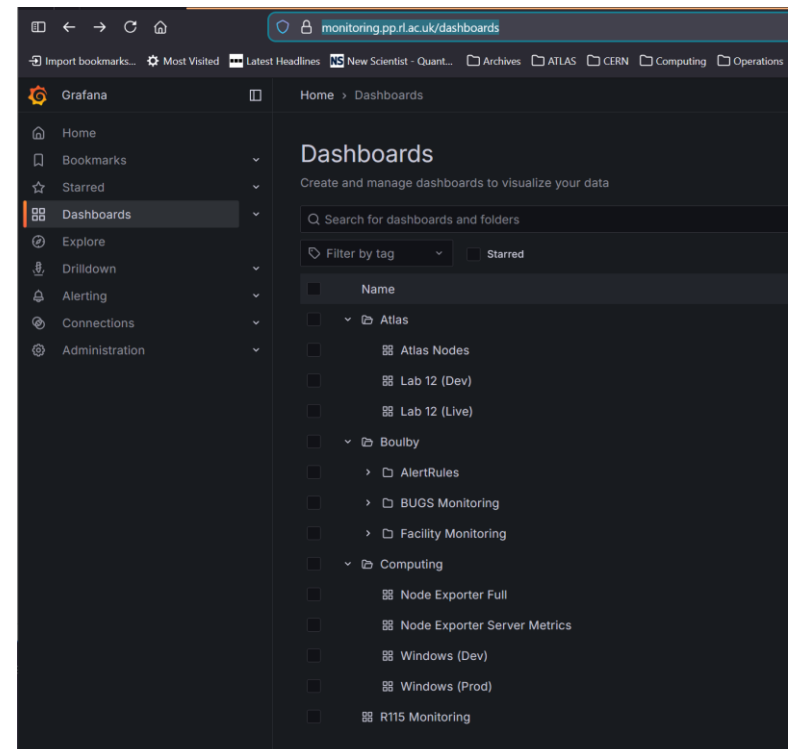
- PPD Sustainability
 - on [Teams](#)
 - also files (so far from the Strategy Group of summer'26)
 - Seminars
 - “[Environmental sustainability in particle physics](#)” – Kristin Lohwasser
 - “[The Climate Emergency: can Particle Physics ever be sustainable?](#)”
- Veronique Boisvert
- Input to European Strategy Update for Particle Physics: [Sustainability](#)
- [Sustainable HEPCAP+](#) report
- [Sustainability Conference for Responsible Research Computing \(SC4RC\)](#)
4-8th May 2026 at CERN
- [Sustainable HEP 2026](#) (5th Edition) – 8-10th July 2026 (Zoom only)

Monitoring

...you can't manage it until you know what it is !

Lab Monitoring

- Group convened by Fergus
- Environmental sensors
 - BMS, R-Pi, PDU, other...
- Infrastructure = Prometheus (database) + Grafana (graphics)
 - <https://monitoring.pp.rl.ac.uk/dashboards>
 - extensive use (already) at Boulby



Travel

- No idea of PPD footprint...but it's certainly not insignificant !
- Estimates from...
 - STFC Travel database
 - Costs database (QMUL/Steve Lloyd)